






24 Murray Grey Drive Kureelpa QLD

5  1  4 

Sitting on one of the finest blocks in Kureelpa, this property is on the market for the first time. The three-and-a-half tranquil acres of flat land feature a solid family home, a huge shed, and magical surroundings.

Well away from the hustle and bustle, the home was designed with a growing family in mind. There are five bedrooms, multiple living areas, and verandahs that run the length of both sides of the home.

The kitchen is at the heart of the home. From here you can watch the kids play in the fully fenced yard or set them free in the undulating pastures whilst the horses graze in the tree-lined paddock. A little further afield, a fabulous little secret is revealed - a huge private watering hole that feeds off the permanent spring-fed Tin Kettle Creek.

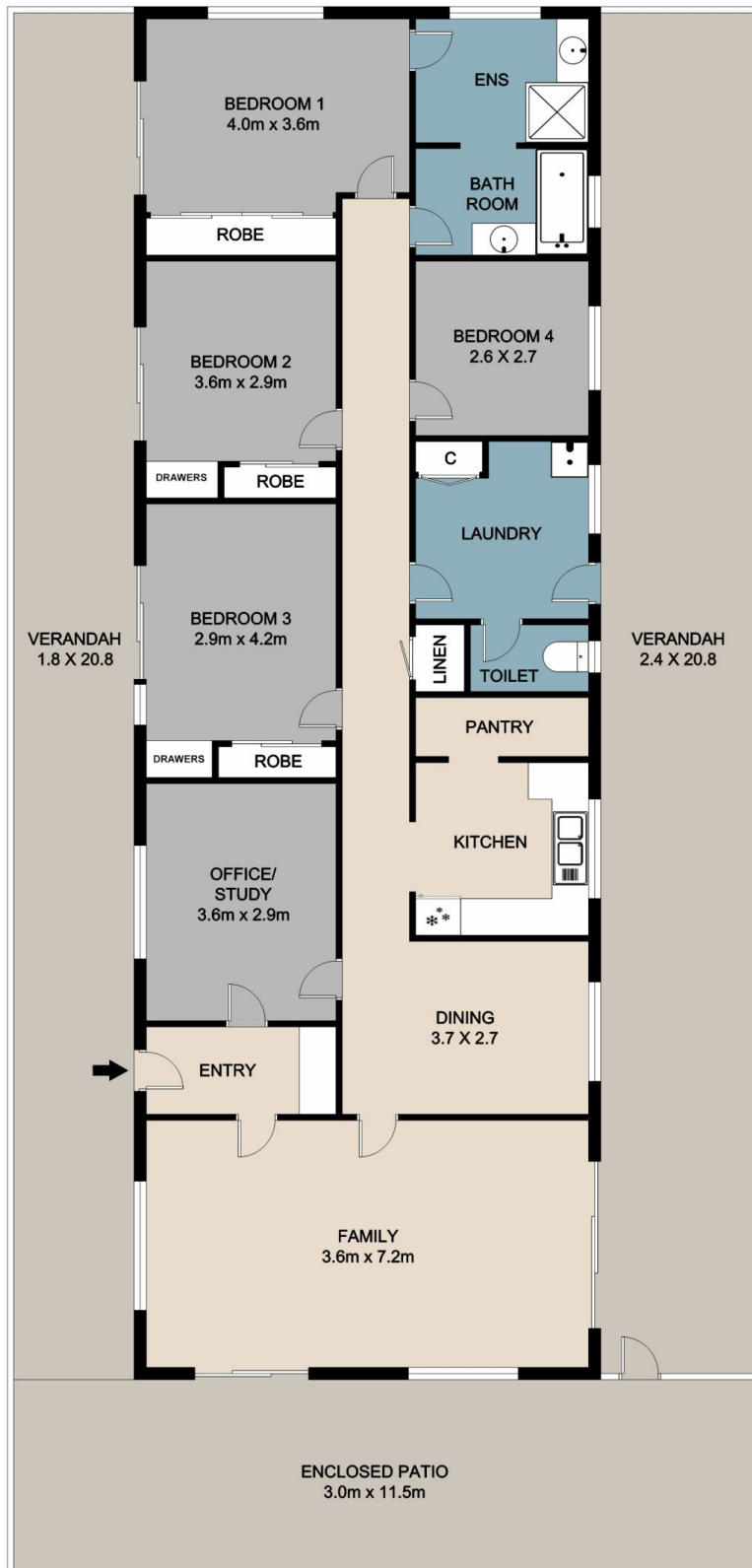
Price : \$ 1,065,000
Building Size : 146 sqm
Land Size : 12320 sqm
View : <https://www.keylinerealty.com/sale/qld/sunshine-coast/kureelpa/residential/house/7419134>



The Andrew Hicks Team Keyline Realty
0754412511



Nicky Reilly
07 5441 2511



This floor plan is conceptual only, it is provided for illustrative purposes and should not be relied upon. We make no guarantee as to the accuracy of this plan, all interested parties should make and rely on their own enquiries in determining the accuracy and information contained on this floor plan.