



105 Flaxton Drive Mapleton QLD

4 🏠 2 🚗 4 🚗

Now this is what dreams are made of! This majestic 90s executive home sits atop a flat park-like acre only moments from Mapleton town. Built to make the most of the expansive ocean views - there isn't a bad room in the house.

Price : \$ 1,150,000
Land Size : 4000 sqm
View : <https://www.keylinerealty.com/sale/qld/sunshine-coast/mapleton/residential/house/7483285>

Enter through the front door, and down the left wing of the home, you will find the light-filled formal lounge and dining: there is room for large parties or late night conversation as you look out the bay windows. You will also find the large master bedroom with walk-in robe and ensuite complete with spa bath here. Follow the banister up the stairs to an area that would suit a reading room, library, office, study or additional bedroom.



Andrew Hicks
07 5441 2511

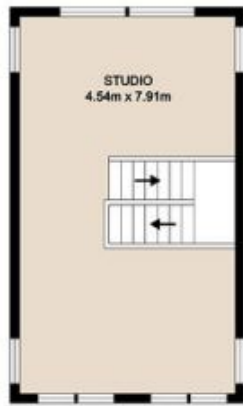


Mark Dunlop
07 5441 2511

Following on from the formal areas is the gorgeous country style kitchen with silky oak finishes and informal dining



105 Flaxton Drive Mapleton



FLOOR 2



This floor plan is conceptual only, it is provided for illustrative purposes and should not be relied upon. We make no guarantee as to the accuracy of this plan, all interested parties should make and rely on their own enquiries in determining the accuracy and information contained on this floor plan.