



### 94 Willandra Place Kureelpla QLD

3  2  10 

This picturesque property is situated on a private road and boasts 31 acres of beautiful green pastures, established gardens, and mature trees. Ideal for a couple, a growing family, or someone searching for a bigger space. The highlight of the property is the grand Queenslander-style home, which has been masterfully designed and built to take full advantage of its elevated position and breathtaking views of the surrounding countryside. The home is set over two levels and features three large bedrooms, two bathrooms, a large office/4th bedroom, a huge billiards/games room, and a sunroom/retreat with 12ft ceilings. The kitchen is fitted with new appliances, granite bench tops, and a walk-in pantry, while the open plan living and dining area features a fireplace and direct access to the expansive wrap-around timber deck, perfect for entertaining and enjoying the serene surroundings.

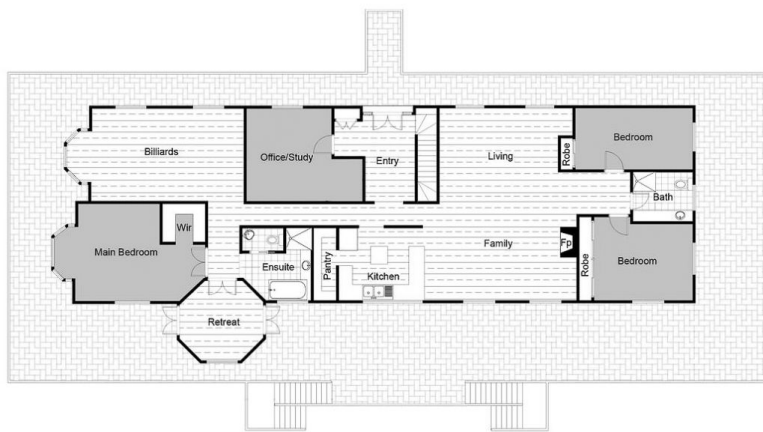
**Land Size** : 12.49 ha  
**View** : <https://www.keylinerealty.com/lease/qld/sunshine-coast/kureelpla/residential/acreagesemirural/7527630>



**Holly Hicks**  
07 5441 2511



**Andrew Hicks**  
07 5441 2511



UPPER FLOOR PLAN



LOWER FLOOR PLAN

This floor plan including furniture, fixture measurements and dimensions are approximate and for illustrative purposes only. BoxBrownie.com gives no guarantee, warranty or representation as to the accuracy and layout. All enquiries must be directed to the agent, vendor or party representing this floor plan.



94 Willandra Pl, Kureepla