






6 Elder Street Nambour QLD

2  2  6 

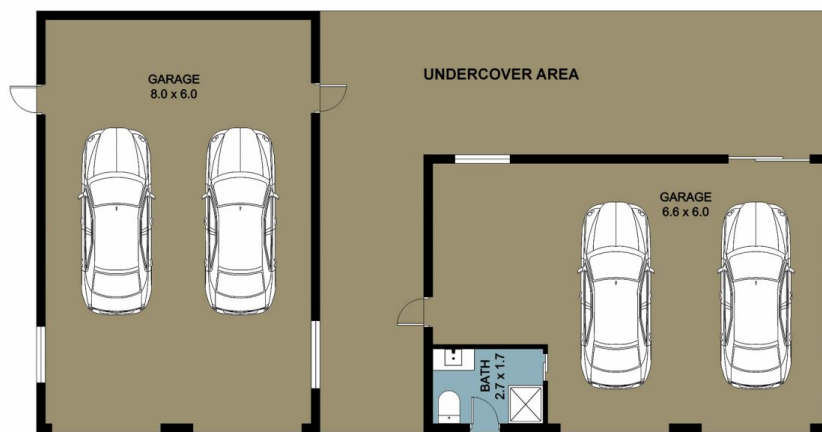
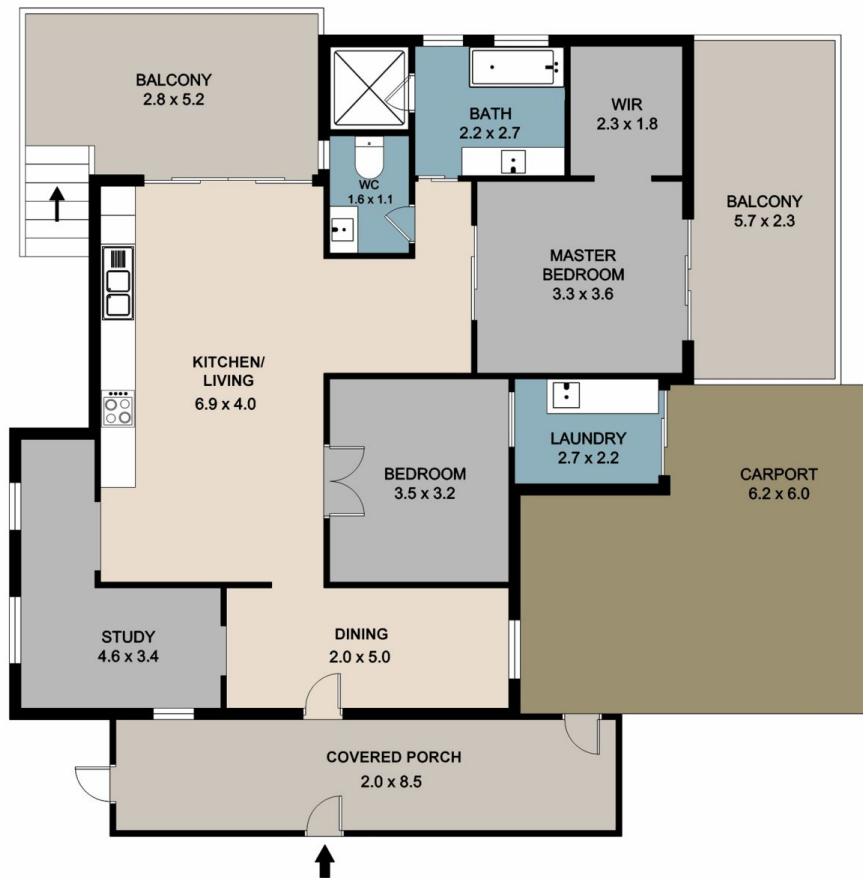
Welcome to your dream home in the heart of convenience! This beautifully renovated 2-bedroom cottage is now available for sale, offering a perfect blend of modern comfort and classic charm. With a rainforest backdrop that you can enjoy from both of the private decks, you won't feel like you're just a short walk away from the Nambour town centre with shopping, public transport, restaurants and many other conveniences that are available.

There are multiple parking options - a 2-bay shed, a 3-bay shed with awning and bathroom/toilet, and a single carport. The location will work well for anyone wanting easy access to the Nambour Aquatic Centre diagonally across the road, dog lovers will love the off-leash option just over the bridge at Petrie Park and the Gary Evans Walkway on the bank of Petrie Creek that runs all the way from Petrie Park to Carter Road. For beach lovers, some of the Sunshine

Price : \$ 607,000
Land Size : 943 sqm
View : <https://www.keylinerealty.com/sale/qld/sunshine-coast/nambour/residential/house/7861095>



Andrew Hicks
 07 5441 2511



NOT IN POSITION

This floor/site plan is conceptual only, it is provided for illustrative purposes and should not be relied upon. We make no guarantee as to the accuracy of this plan, all interested parties should make and rely on their own enquiries in determining the accuracy and information contained on this floor/site plan.