



**65 Nambour Mapleton Road Nambour QLD**

3  2  2 

Perched on the side of a hill off a sliplane, this large family home is filled with character and charm.

With a fairly unassuming streetfront, enter through the front door and you will instantly feel the character. Look out from the country-style kitchen and the deck to a peaceful vista over Nambour and surrounds. Polished floorboards throughout the top floor lead you to three good-sized bedrooms, comfy living area and extra storage room.

Downstairs currently contains a workshop, second bathroom and teenage retreat, but could be reconfigured to a dual living option or extra large rumpus space.

The backyard is spacious, and there are additional entertaining areas: bring your tools and bring them up to speed.

**Price** : \$ 624,000  
**Land Size** : 607 sqm  
**View** : <https://www.keylinerealty.com/sale/qld/sunshine-coast/nambour/residential/house/7919810>



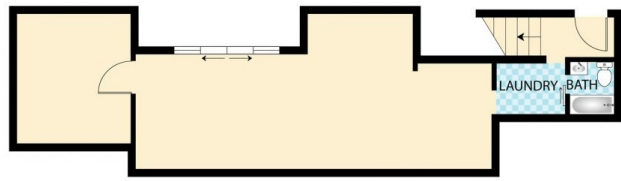
**Andrew Hicks**  
07 5441 2511



**Mark Dunlop**  
07 5441 2511



**UPSTAIRS**



**DOWN STAIRS**

3 BED 2 BATH 1 CAR

65 Nambour Mapleton Rd, Nambour

Floor plan is for illustrative purposes only. Any dimensions are approximate. All information gathered here from source we believe reliable. However we cannot guarantee its accuracy and interested persons should make their own enquiries to determine to your satisfaction as to the suitability of the property for your space requirements. This floor plan produced by Step Inside property Imaging ©Copyright This image may not be used or reproduced in whole or part with out written permission

