






66/18 Landershute Road Palmwoods QLD

2  1  1 

Set in the leafy Palmwoods Tropical Village for over 50s, this air-conditioned two-bedroom home (with built-in robes) is ready to move in.

- Large carport for 2 vehicles
- 5kw air-conditioner
- High raked ceilings in the living areas
- Fully insulated
- Stainless steel appliances, gas cooktop
- NBN connection ready plus two TV ports
- Fenced with turf and landscaping
- Private back garden with shed
- the village features communal BBQ facilities and is only a heartbeat away from the centre of Palmwoods
- views to the Blackall Range
- 20 minutes' drive to Sunshine Coast beaches

Price : \$419,000

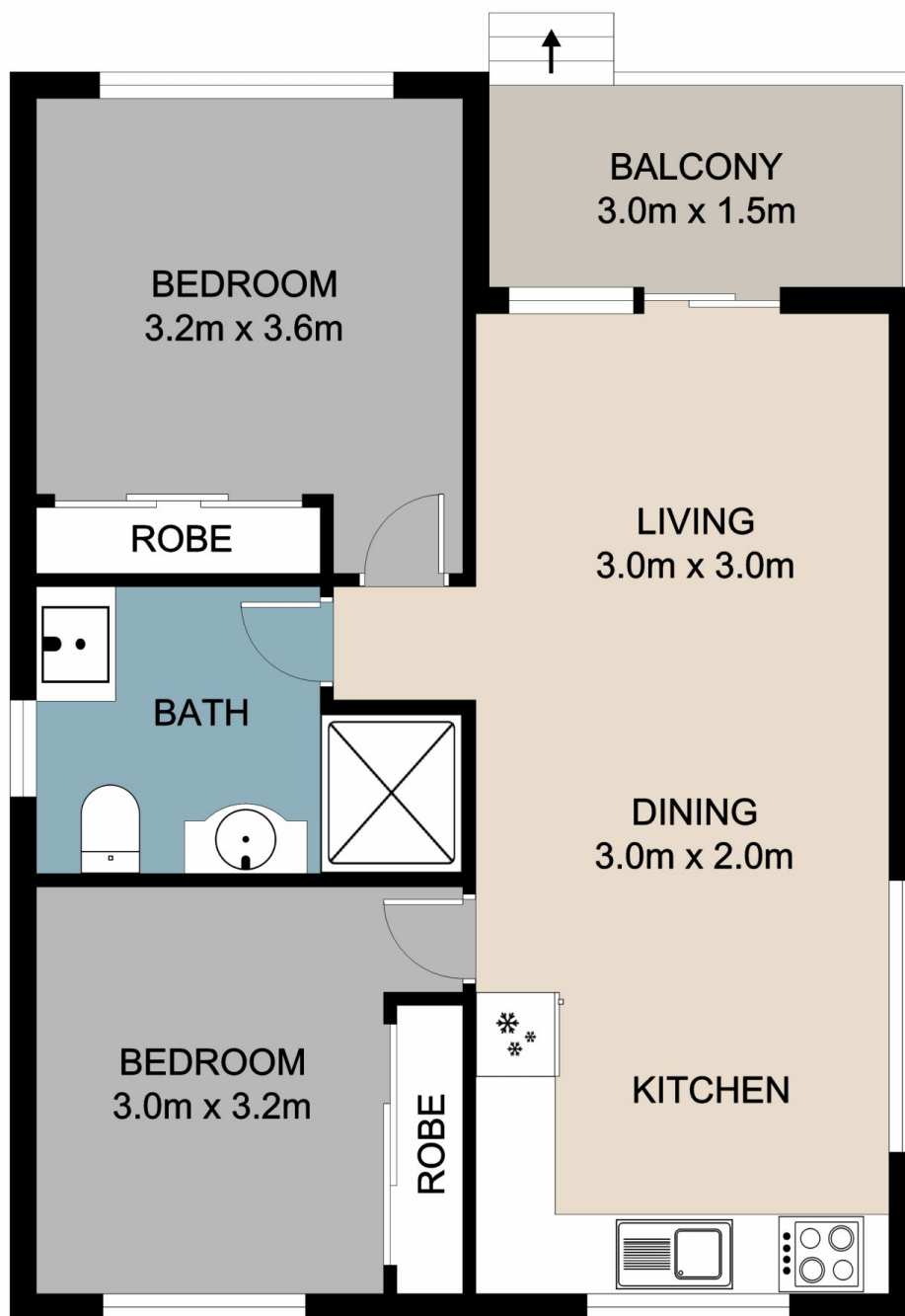
View : <https://www.keylinerealty.com/sale/qld/sunshine-coast/palmwoods/residential/house/7939961>



Andrew Hicks
07 5441 2511



66/18 Landershute Road
Palmwoods



This floor plan is conceptual only, it is provided for illustrative purposes and should not be relied upon. We make no guarantee as to the accuracy of this plan, all interested parties should make and rely on their own enquiries in determining the accuracy and information contained on this floor plan.