

38-40 City View Terrace Nambour QLD

3  1  2 

Nestled among the treetops, this charming 3-bedroom home offers a tranquil escape with modern comforts. The timber floors and fireplace add character, while the elevated position provides a sense of serenity.

The location seems ideal, offering easy access to both the Sunshine Coast's stunning coastline and its picturesque hinterland. With surf beaches, the airport, shops, cafes, schools, and public transport all within reach, convenience meets natural beauty here.

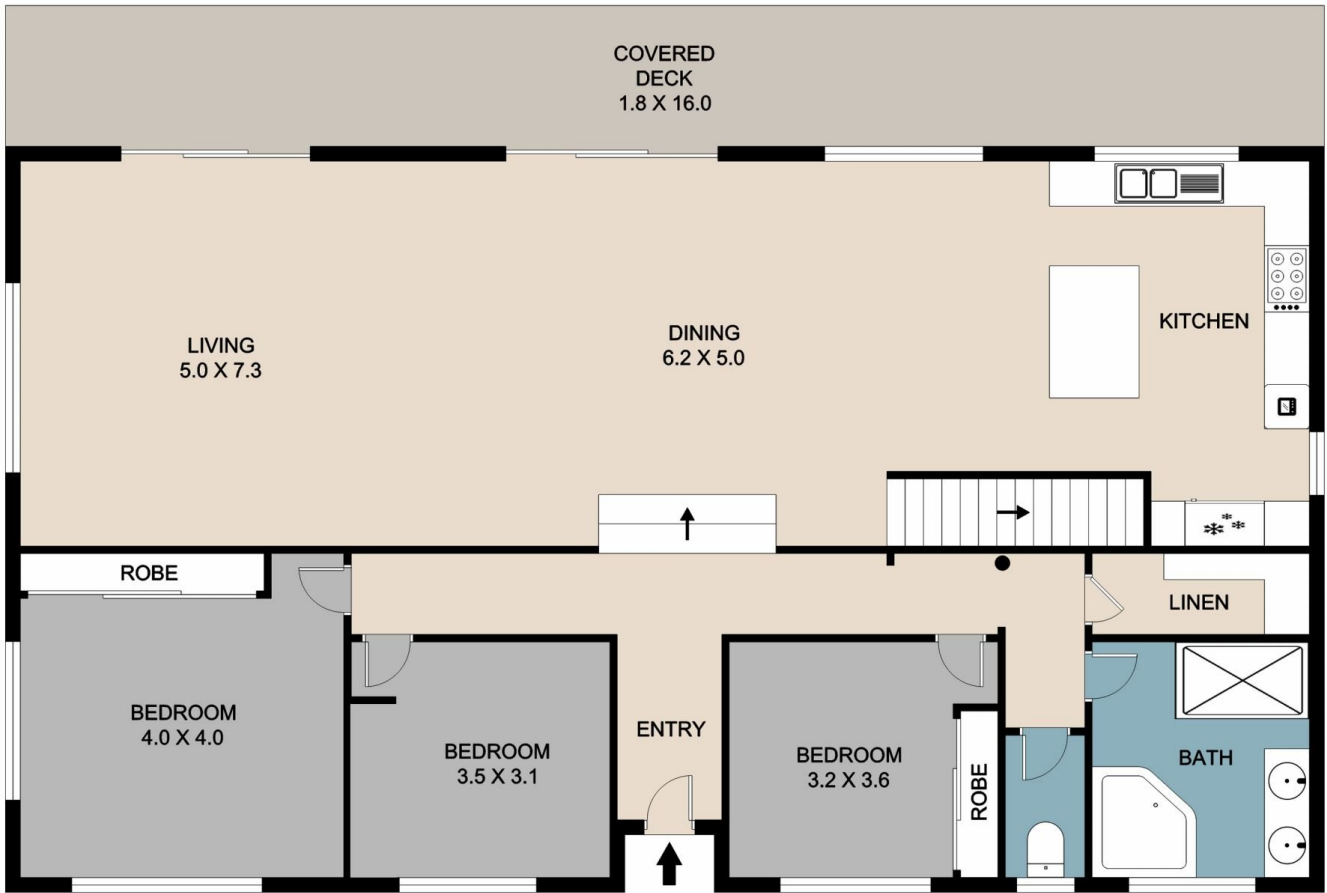
The property boasts a modern kitchen with stone benchtops and high-quality appliances, ensuring both functionality and style. Outdoor spaces include a covered verandah at the rear and a covered outdoor living space at the front, perfect for enjoying the surrounding nature.

Price : \$829,000
Land Size : 1345 sqm
View : <https://www.keylinerealty.com/sale/qld/sunshine-coast/nambour/residential/house/7998602>

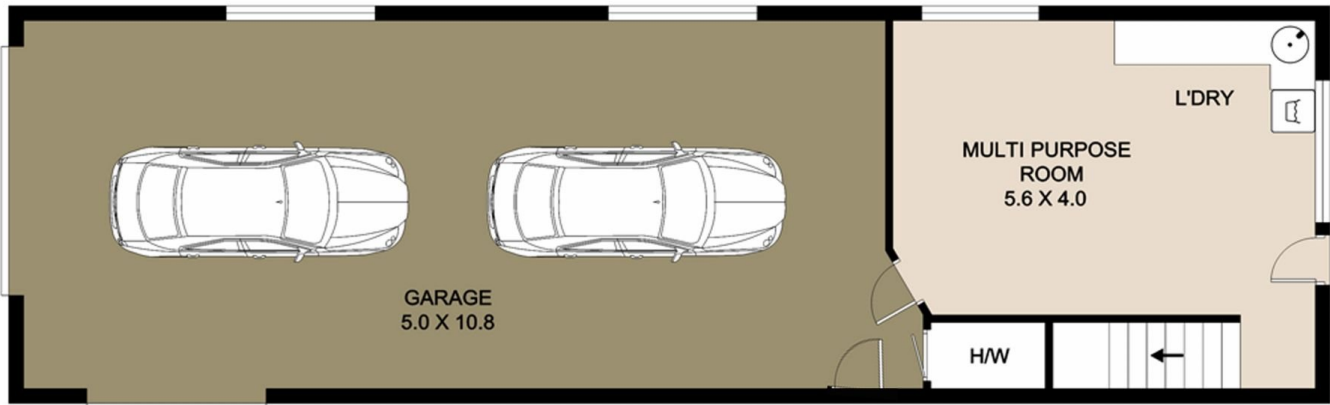


Andrew Hicks
07 5441 2511

MAIN LEVEL



LOWER LEVEL



This floor/site plan is conceptual only, it is provided for illustrative purposes and should not be relied upon. We make no guarantee as to the accuracy of this plan, all interested parties should make and rely on their own enquiries in determining the accuracy and information contained on this floor/site plan.