






24 Raylee Avenue Nambour QLD

3  1  5 

Nestled in a tranquil neighborhood, this charming 1980s-built home offers a perfect blend of comfort, potential, and convenience. With its solid construction and well-designed layout, it's an ideal choice for families, car enthusiasts, and those looking for future expansion opportunities.

The property features three spacious and bright bedrooms, providing ample space for family living or accommodating guests. A well-maintained and functional bathroom ensures convenience and comfort for all residents. Additionally, the secure garage offers parking space for your vehicle along with additional storage for tools and equipment, while four covered carports provide ample parking for multiple vehicles, perfect for large families or car enthusiasts

Type : House
Price : \$ 738,000
Building Size : 112 sqm
Land Size : 693 sqm
View : <https://www.keylinerealty.com/sale/qld/sunshine-coast/nambour/residential/house/8034022>



Andrew Hicks
07 5444 2511

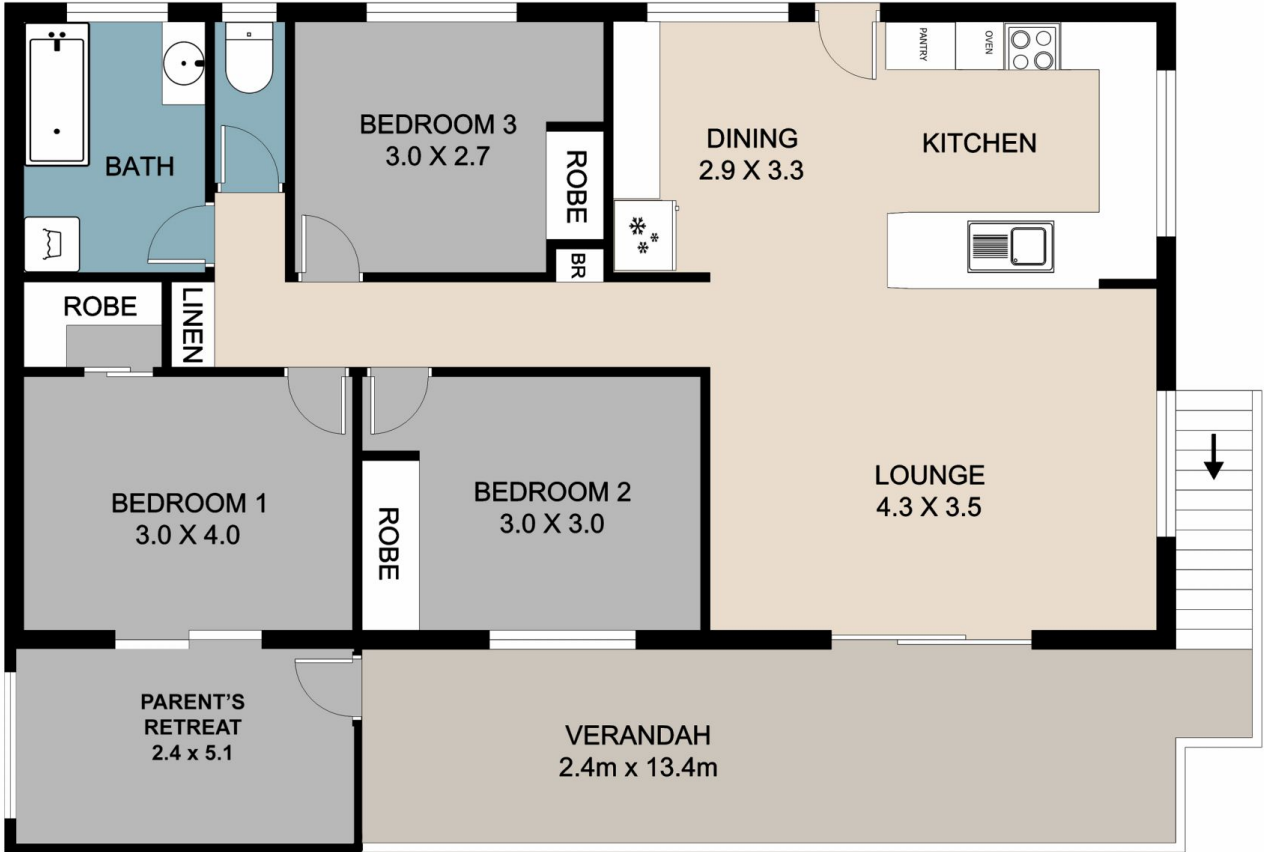


Adriaan Coetzee
07 5444 2511

[For full version visit the website](https://www.keylinerealty.com)



24 Raylee Avenue Nambour



This floor/site plan is conceptual only, it is provided for illustrative purposes and should not be relied upon. We make no guarantee as to the accuracy of this plan, all interested parties should make and rely on their own enquiries in determining the accuracy and information contained on this floor/site plan.